

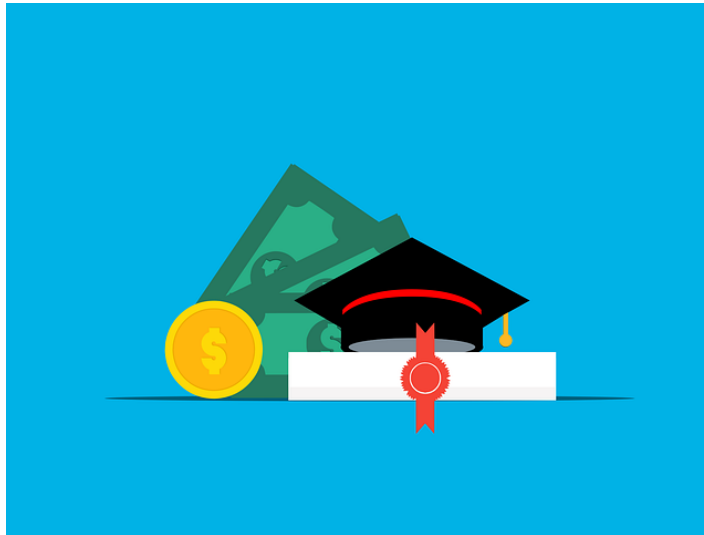
April 2023



**TRUST UPDATES**

*To provide the best educational opportunities for the advancement and support of all who work within and for the independent funeral service profession.*

The banner features the logo for Selected Educational Trust, which includes a pyramid and the text "SELECTED EDUCATIONAL TRUST EST. 1982 INDEPENDENT FUNERAL HOMES". The background shows two hands reaching towards each other.



## Second Career Scholarship Applications Now Open

Do you know someone that is in mortuary science school and pursuing funeral service as a career later in life? Second Career Scholarships offered by the Selected Educational Trust are the perfect way to support the development and growth of the apprentices and funeral assistants on your team. Thanks to sponsor [Gunderson Funeral and Cremation Care](#), two \$1,500 scholarships will be awarded this June. But don't wait, applications must be received by Wednesday, May 31. [Apply today!](#)

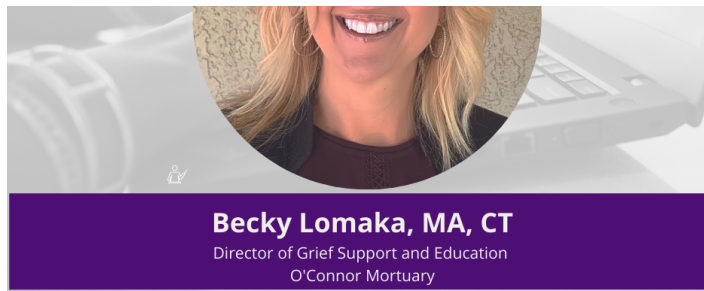


**Instructor Spotlight**  
Meet this month's featured instructor

[funeral-institute.org](http://funeral-institute.org)

**INSTITUTE**  
OF EXCEPTIONAL  
FUNERAL SERVICE  
SELECTED EDUCATIONAL TRUST

The banner features a circular portrait of a woman with blonde hair. The background is dark blue with a gold border at the bottom.



## Spotlight on Institute Instructor Becky Lomaka

"I'm really interested in helping people find their why." This month, get to know Institute instructor Becky Lomaka and her course, *Guiding Families Toward Meaning and Healing*. Over the next few weeks, we will share highlights from our interview with Becky on our social media. Follow us on Facebook and LinkedIn to catch every installment and hear from Becky herself about why you should register your team for her course.

The Institute's self-paced online courses feature a flexible and convenient format and a roster of well-respected instructors from across the funeral service profession. Work independently online to complete lessons and assignments and to interact with instructors, wherever and whenever fits your schedule, all while earning up to 8.0 hours of continuing education.

Space is limited, [register today](#). Group rates available. Selected members are eligible for a \$100 discount per course; email [institute@selectedtrust.org](mailto:institute@selectedtrust.org) to request your coupon code.



## Tips to Optimize Your Charitable Giving

While last year presented continued challenges, charitable giving remained strong, according to Giving USA. Individuals, foundations, and corporations gave an estimated \$484.45 billion to U.S. charities in 2021. The prior year's global pandemic, the economic crisis and recovery, and efforts to advance racial justice created the widespread need and significantly increased the demands on nonprofit organizations. Americans continued giving more generously than before the pandemic.

Despite the ongoing as well as new challenges and uncertainty, the economic environment remains favorable for charitable giving in 2023. Additionally, charitable donations are a great

remains favorable for charitable giving in 2020. Additionally, charitable donations are a great way to benefit those in need and have the added benefit of a tax deduction. But what is the best way to give? Appreciated non-cash assets or cash? Our friends at Madison Wealth Management have shared some advice to help guide your charitable giving strategy, [read the full article here](#).

---



### **Don't Miss a Thing**

Make sure to follow the Trust on [Facebook](#) and [LinkedIn](#) to be in the know on every fresh job posting, scholarship opportunity, and announcement. As a bonus, hear the personal stories of our donors and scholarship recipients.

---



### **Make Your Giving Count**

Supporting the Trust is an investment in the future of independent funeral service and lifelong learning. Contributions are tax-deductible.

**Make a Gift**

---

**Thank You to Our Donors**

March 1-31, 2023

Baue Family Charitable Fund, Lisa Baue, Saint Charles, MO (*In memory of Richard Bibber*)  
Kimberly Farris-Luke, Farris Funeral Service, Inc., Abingdon, VA  
Flanner Buchanan, Tony Lloyd, Indianapolis, IN  
The Foresight Companies, Chris Cruger, Phoenix, AZ  
Hackman Family Funeral Homes, Gregory B. Hackman, Sturgis, MI (*In memory of Barbara Broussard*)  
Haisley Funeral and Cremation Service, Richard F. Haisley, Fort Pierce, FL  
Hinsey-Brown Funeral Service, Inc., Kevin D. Brown, New Castle, IN  
Keohane Funeral Home, John E. Keohane, Quincy, MA (*In memory of Richard Bibber*)  
John and Claudia Kepner, Raymer-Kepner Funeral Home, Huntersville, NC  
Lensing Funeral & Cremation Service, Michael Lensing, Iowa City, IA  
O'Connor Mortuary, Joseph G. Fitzgerald, Laguna Hills, CA  
Selected Group 1 Fund (*In memory of Richard Bibber*)  
Selected Group 1 Fund (*In memory of Michael Rhoney*)  
Trimble Funeral Home & Crematory, Eric and Barb Trimble, Moline, IL

*Make your gift in memory or in celebration of a loved one, family member, colleague or friend  
For more information on ways to give, contact [Stefanie](#).*

---

[Home](#) | [Contact](#) | [About Us](#) | [Giving](#)

Be sure to add our email address to your address book or safe senders list so our emails get to your inbox.

[Privacy Policy](#) | [Unsubscribe](#)

[Selected Educational Trust](#)

One Overlook Point, Suite 530, Lincolnshire, IL 60069